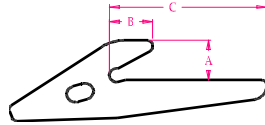
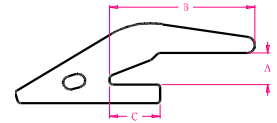


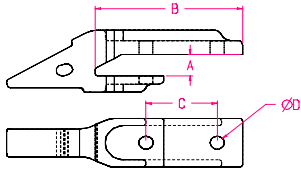
Flush Mount



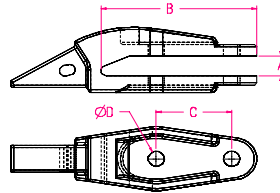
Bottom Leg



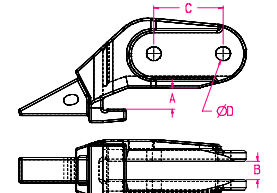
Wrap Around



Bolt-on A



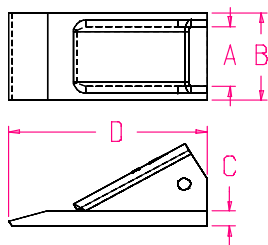
Bolt-on B



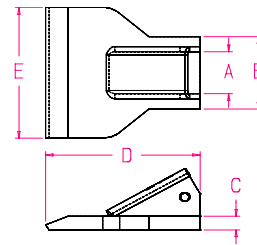
Bolt-on Corner

23 Series Shanks

CL-1001-23	Flush Mount	4.02	0.94	4.70	7.98	N/A	23 Series Pin	N/A
CL-1001-23-1	Flush Mount	3.80	0.75	3.51	6.79	N/A	23 Series Pin	N/A
CL-1002-23	Flush Mount	4.01	1.19	4.70	7.98	N/A	23 Series Pin	N/A
12S1A-8-23	Bottom Leg	2.70	1.09	1.11	7.01	N/A	23 Series Pin	N/A
V2-23	Bottom Leg	6.08	1.06	2.69	5.24	N/A	23 Series Pin	N/A
V1-23LH		5.40	Please contact for information				23 Series Pin	N/A
V1-23RH		5.40	Please contact for information				23 Series Pin	N/A
16S7-8-23	Wrap Around	3.47	1.06	4.50	1.56	N/A	23 Series Pin	N/A
1S7-8-23	Wrap Around	3.51	0.95	4.50	2.12	N/A	23 Series Pin	N/A
CB10001-23	Wrap Around	5.00	1.09	5.62	2.75	N/A	23 Series Pin	N/A
D1002-23	Wrap Around	3.48	1.05	4.50	1.56	N/A	23 Series Pin	N/A
D1003-23	Wrap Around	3.74	0.69	4.50	1.56	N/A	23 Series Pin	N/A
D1004-23	Wrap Around	3.48	1.05	4.50	1.56	N/A	23 Series Pin	N/A
D415651	Wrap Around	9.00	2.06	8.71	2.56	N/A	23 Series Pin	N/A
D48212	Wrap Around	4.25	1.06	5.70	2.85	N/A	23 Series Pin	N/A
TB-1001-23	Wrap Around	4.40	1.41	5.51	1.68	N/A	23 Series Pin	N/A
TB-2002-23	Wrap Around	7.71	2.31	8.28	2.81	N/A	23 Series Pin	N/A
TB-3003-23	Wrap Around	10.14	1.32	12.26	2.74	N/A	23 Series Pin	N/A
LAF9201	Wrap Around	6.58	1.81	5.99	3.19	N/A	23 Series Pin	N/A
LAF9201-8275	Wrap Around		Please contact for information				23 Series Pin	N/A
D49586	Bolt-on A	6.61	0.77	6.22	3.00	0.66	23 Series Pin	N/A
F3445-D-23	Bolt-on B	8.64	0.81	6.12	3.00	0.69	23 Series Pin	N/A
H-017023	Bolt-on Flush Mount	5.25	Please contact for information				23 Series Pin	N/A



Style A



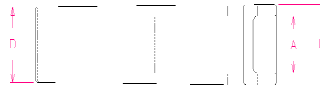
Style B

23 Series Fabricated Teeth

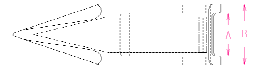
8023	Style A	2.04	1.50	2.25	0.50	5.12	N/A	23 Series Pin
8523	Style B	4.20	1.50	2.64	0.50	5.25	4.77	23 Series Pin
8823	Style A	2.30	1.50	2.25	0.56	5.50	N/A	23 Series Pin
8923H	Style A	2.90	1.50	2.38	0.62	5.50	N/A	23 Series Pin



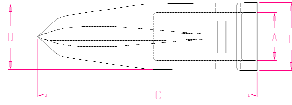
Style A



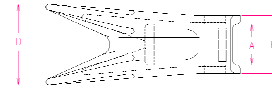
Style B



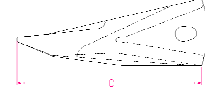
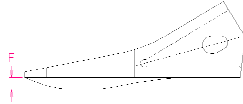
Style C



Style D

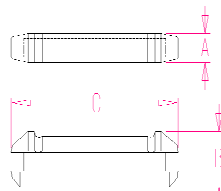


Style E

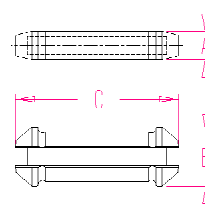


23 Series Cast Teeth

8023C	Style A	2.04	1.50	2.25	0.50	5.12	N/A	23 Series Pin
8230	Style B	2.50	1.50	2.12	5.85	2.00	N/A	23 Series Pin
8230S	Style B	1.46	1.50	2.12	4.95	2.00	N/A	23 Series Pin
8330	Style B	2.80	1.50	2.12	5.85	2.12	N/A	23 Series Pin
8330F	Style B	3.00	1.50	2.12	5.85	2.12	N/A	23 Series Pin
8523CL	Style B	3.50	1.50	2.18	5.41	4.75	N/A	23 Series Pin
8623-1	Style C	3.20	1.50	2.12	6.67	N/A	N/A	23 Series Pin
8623-1F	Style C	3.20	1.50	2.12	6.67	N/A	N/A	23 Series Pin
8623TP-1	Style E	3.52	1.50	2.12	6.28	3.00	N/A	23 Series Pin
8723	Style D	2.45	1.50	2.12	6.35	2.06	0.35	23 Series Pin
8723F	Style D	2.69	1.50	2.12	6.35	2.06	0.35	23 Series Pin



Style C



Style D

23 Series Flex Pins

RP-H23	Style C		0.39	0.69	2.12		
RP-H23R*	Style C		0.39	0.69	2.12		R* = Red Rubber
RP-H23XL	Style C		0.39	0.69	2.50		
RP-H23L	Style C		0.39	0.69	2.26		
RP-H23DBL	Style D		0.39	0.73	2.26		