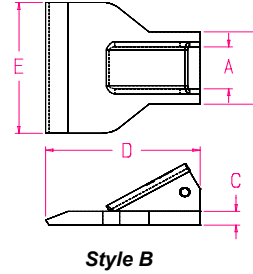
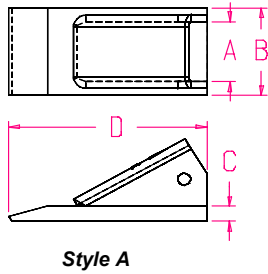


24 Series Shanks

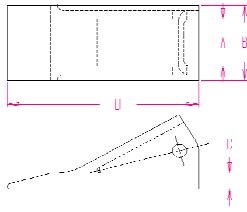
Part #	Style	Weight lbs	A	B	C	D	E	Pin	
16L3BW-8-24	Wrap Around	4.75	1.06	5.50	2.00	N/A	24 Series Pin	N/A	
17S1-8-24	Bottom Leg	6.46	1.49	1.13	5.63	N/A	24 Series Pin	N/A	
2432-AW-24		2.75	Please contact for information					24 Series Pin	N/A
F240-110-13	Bolt-on A	8.13	1.06	7.50	3.75	0.69	24 Series Pin	N/A	
240-110-08	Bolt-on A	8.70	1.13	7.25	3.50	0.69	24 Series Pin	N/A	
F-3679-A-24	Bolt-on B	12.40	1.06	7.75	3.75	0.81	24 Series Pin	N/A	
F3679-24	Bolt-on Corner	17.10	1.23	1.06	3.75	0.81	24 Series Pin	N/A	
F-560-24	Ripper		Please See Scarfier Series and Ripper Shanks					24 Series Pin	N/A
F-506-24	Ripper	44.80	Please See Scarfier Series and Ripper Shanks					24 Series Pin	N/A
F2021-F24	Bolt-on		Please contact for information					24 Series Pin	N/A



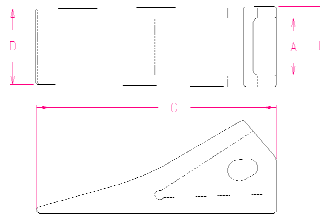
24 Series Fabricated Teeth

8024	Style A	3.28	1.50	2.25	0.56	6.50	N/A	24 Series Pin
8524	Style B	4.25	1.50	2.50	0.50	6.50	4.50	24 Series Pin
8824	Style A	3.60	1.50	2.38	0.62	6.40	N/A	24 Series Pin

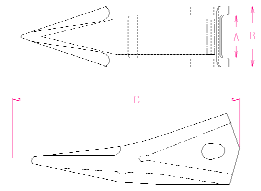




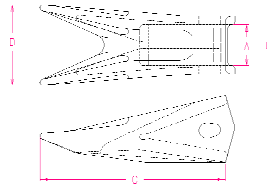
Style A



Style B



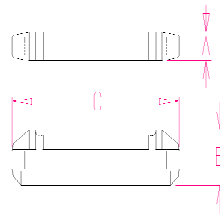
Style C



Style E

24 Series Cast Teeth

8024C	Style A	3.28	1.50	2.25	0.56	6.50	N/A	24 Series Pin
8124	Style B	4.27	1.50	2.50	6.50	2.50	N/A	24 Series Pin
8340	Style B	4.00	1.50	2.38	7.03	2.25	N/A	24 Series Pin
8624	Style C	4.04	1.50	2.14	7.50	N/A	N/A	24 Series Pin
8624-TP	Style E	5.07	1.50	2.14	7.50	3.12	N/A	24 Series Pin



Style C

24 Series Flex Pins

RP-H24	Style C		0.50	0.83	2.26			
--------	---------	--	------	------	------	--	--	--

