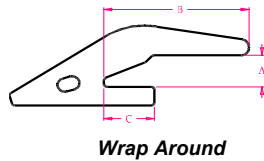
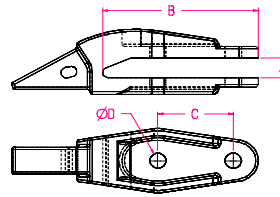


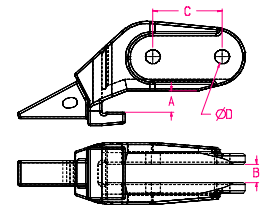
Bolt-on A



Wrap Around



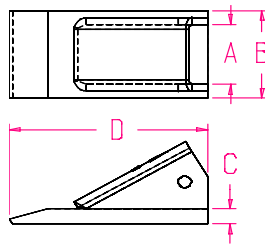
Bolt-on B



Bolt-on Corner

25 Series Shanks

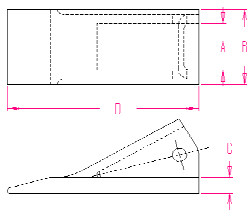
20L15BW-8-25	Wrap Around	7.40	1.56	5.63	2.00	N/A	25 Series Pin	N/A
20L3BW-8-25	Wrap Around	7.80	1.31	5.62	2.00	N/A	25 Series Pin	N/A
20LBW-8-25-EX	Wrap Around	9.20	1.36	6.50	3.00	N/A	25 Series Pin	N/A
F-251-112-15	Bolt on A	10.97	1.31	8.25	4.25	0.81	25 Series Pin	N/A
F-251-112-20	Bolt on A	11.20	1.31	7.50	3.50	0.69	25 Series Pin	N/A
D49940	Bolt on A	11.52	1.03	8.50	3.75	0.69	25 Series Pin	N/A
F3637-A-25	Bolt on B	12.90	1.06	7.75	3.75	0.81	25 Series Pin	N/A
F4272-A-25	Bolt on B	14.80	1.31	7.25	3.50	0.81	25 Series Pin	N/A
F3679-A-25	Bolt on B	12.70	1.06	7.75	3.75	1.06	25 Series Pin	N/A
F3608-D-25-LH	Bolt on Corner	14.50	Please contact for information				25 Series Pin	N/A
F3679-25	Bolt on Corner	17.20	1.23	1.06	3.75	1.06	25 Series Pin	N/A
F3637-25	Bolt on Corner	17.97	1.23	1.06	3.75	0.81	25 Series Pin	N/A
F3623-25	Bolt on Corner	14.00	1.50	1.28	3.50	0.81	25 Series Pin	N/A
F-507-C-25	Ripper	93.10	Please See Scarfier Series and Ripper Shanks				25 Series Pin	N/A



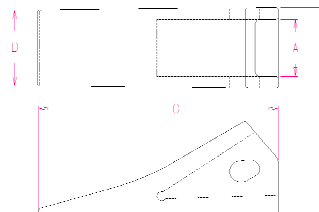
Style A

25 Series Fabricated Teeth

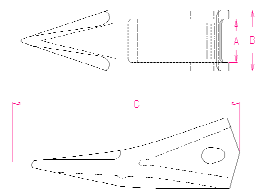
8825	Style A	4.50	2.00	2.88	0.62	6.88	N/A	25 Series Pin
8825H	Style A	5.20	2.00	2.88	0.75	6.88	N/A	25 Series Pin



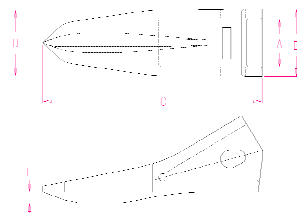
Style A



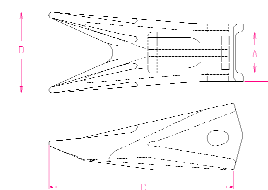
Style B



Style C



Style D



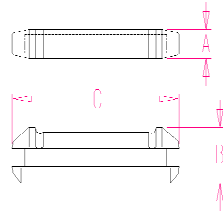
Style E



P.O. Box 673
Findlay, Ohio 45839
800 628 2715
Fax 419 427 0874

25 Series Cast Teeth

8025C	Style A	4.50	2.00	2.88	0.75	6.88	N/A	25 Series Pin
8250	Style B	6.80	2.00	2.88	7.62	2.62	N/A	25 Series Pin
8525	Style B	7.00	2.00	2.77	7.00	5.38	N/A	25 Series Pin
8625	Style C	6.13	2.00	2.77	7.97	N/A	N/A	25 Series Pin
8625-TP	Style E	6.46	2.00	2.78	7.63	3.63	N/A	25 Series Pin
8725	Style D	6.90	2.03	2.88	8.28	2.71	0.57	25 Series Pin



Style C

25 Series Flex Pins

RP-H25	Style C		0.50	0.83	2.75			
TF25P-A	Style C		0.50	0.83	3.03			



P.O. Box 673
 Findlay, Ohio 45839
 800 628 2715
 Fax 419 427 0874