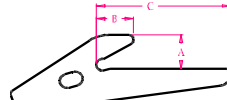
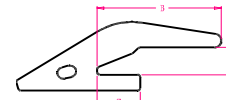


Flush Mount



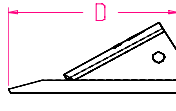
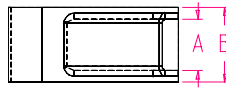
Bottom Leg



Wrap Around

2A Shanks

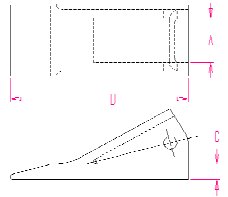
Part #	Style	Weight lbs	A	B	C	D	Pin	Lock
12L4DW-8-2A	Flush Mount	1.87	0.75	3.75	6.87	N/A	N/A	N/A
12L5DW-8-2A	Flush Mount	1.91	0.69	3.75	6.87	N/A	N/A	N/A
12L6DW-8-2A	Flush Mount	1.95	0.69	3.75	6.87	N/A	N/A	N/A
12L6DW-8-2A-H	Flush Mount	1.95	0.69	3.75	6.87	N/A	RP-H2A	N/A
1S1-8-2A	Bottom Leg	1.52	0.63	0.81	3.87	N/A	N/A	N/A
1S5-8-2A	Bottom Leg	2.16	0.35	N/A	4.00	N/A	N/A	N/A
1S5-8-2A-S	Bottom Leg	1.36	0.57	N/A	3.00	N/A	N/A	N/A
CD-1-2A	Bottom Leg	1.50	0.57	0.93	3.88	N/A	N/A	N/A
SA-15625	Wrap Around	3.68	1.59	5.63	2.12	N/A	N/A	N/A
TB-8000-2A	Wrap Around	2.71	1.50	7.22	2.72	N/A	N/A	N/A



Style A

2A Fabricated Teeth

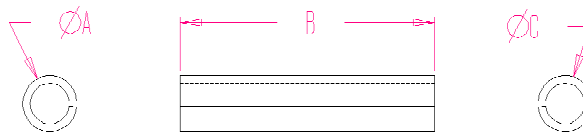
Part #	Style	Weight lbs	A	B	C	D	E	Pin
8002A	Style A	1.01	1.10	1.75	0.38	4.12	N/A	2A Series Pin
8802A	Style A	1.18	1.10	1.75	0.44	4.31	N/A	2A Series Pin



Style A

2A Cast Teeth

Part #	Style	Weight lbs	A	B	C	D	E	Pin
8002A-C	Style A	1.01	1.10	1.75	0.38	4.12	N/A	2A Series Pin



Style A

2A Roll Pins

Part #	Style	Weight lbs	A	B	C
RP-H2A	Style A		0.32	1.50	0.32
06-61958	Style A		0.31	1.75	0.32

