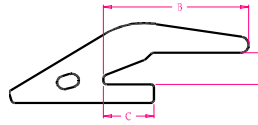


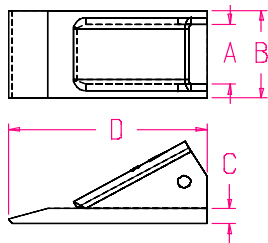
**Bottom Leg**



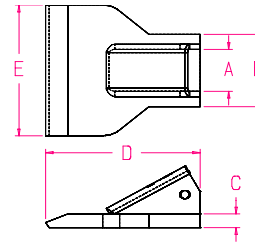
**Wrap Around**

**3C Shanks**

16S7-8-3C	Wrap Around	2.76	0.81	3.36	1.56	N/A	N/A	N/A
D58499	Wrap Around	2.23	0.95	6.00		N/A	N/A	N/A
3D1-8-3C		7.62	Please contact for information					N/A
23D1-8-3C		2.23	Please contact for information					N/A
D26368	Bottom Leg	2.64	0.88	0.82	4.07	N/A	N/A	N/A
HH8003-C	Bottom Leg	2.61	0.56	N/A	4.00	N/A	N/A	N/A



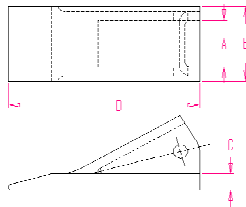
**Style A**



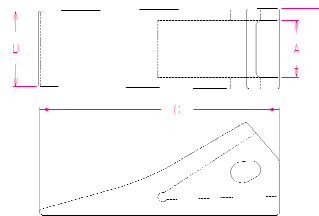
**Style B**

**3C Fabricated Teeth**

8003C	Style A	1.60	1.50	2.25	0.38	4.75	N/A	Crimp-on
8003C Blunt		1.60	1.50	2.25	0.38	4.75	N/A	Crimp-on
8003CLH	Style A	1.70	1.50	2.75	0.50	4.75	N/A	Crimp-on
8003CLHB		1.70	1.50	2.75	0.50	4.75	N/A	Crimp-on
8003CRH	Style A	1.70	1.50	2.75	0.50	4.75	N/A	Crimp-on
8003CRHB		1.70	1.50	2.75	0.50	4.75	N/A	Crimp-on
8103C	Style A	1.95	1.50	2.25	0.50	4.88	N/A	Crimp-on
8103C Blunt		1.95	1.50	2.25	0.50	4.88	N/A	Crimp-on
8503C	Style B	3.17	1.50	2.64	0.50	5.25	4.77	Crimp-on



**Style A**



**Style B**

**3C Cast Teeth**

8003C	Style A	1.60	1.50	2.25	0.50	4.75	N/A	Crimp-on
8503CA	Style B	3.17	1.50	2.64	0.50	4.77	N/A	Crimp-on



P.O. Box 673  
Findlay, Ohio 45839  
800 628 2715  
Fax 419 427 0874