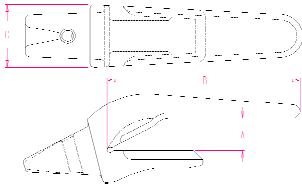
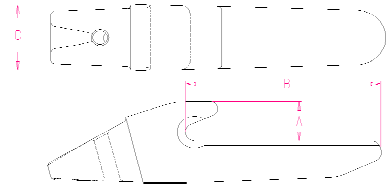


**Flush Mount Bolt on**



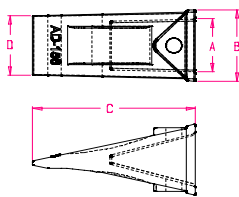
**Wrap Around**



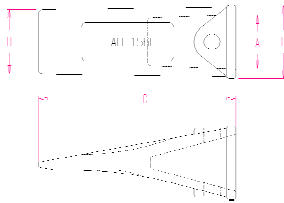
**Bottom Leg**

**Hensley Style**

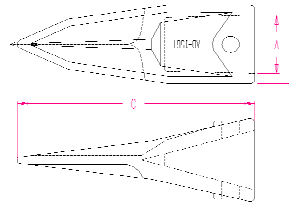
Part #	Style	Weight lbs	A	B	C	D	E	Pin	
H-834156	Bottom Leg	4.50	1.08	4.99	1.80	N/A	N/A	156 Series Pin	
H-548156	Wrap Around	4.00	0.69	4.47	2.19	N/A	N/A	156 Series Pin	
H-550156	Wrap Around	4.70	1.06	6.25	2.19	N/A	N/A	156 Series Pin	
H-550156-L	Corner Shank	Please contact for information					N/A	N/A	156 Series Pin
H-550156-R	Corner Shank	Please contact for information					N/A	N/A	156 Series Pin
H-552156	Wrap Around	5.40	0.81	5.59	2.41	N/A	N/A	156 Series Pin	
H-552156-L	Corner Shank	Please contact for information					N/A	N/A	156 Series Pin
H-552156-R	Corner Shank	Please contact for information					N/A	N/A	156 Series Pin
H230156	Wrap Around	4.00	0.69	4.00	2.08	N/A	N/A	156 Series Pin	
H-017156	Flush Mount Bolt on	5.29	0.63	5.94	3.00	0.69	N/A	156 Series Pin	
H-117156	Flush Mount Bolt on	5.25	0.83	5.94	3.00	0.69	N/A	156 Series Pin	
H-836156	Bolt on	3.56	Please contact for information					N/A	156 Series Pin



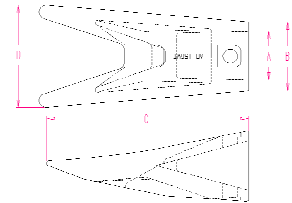
**AD-156**



**AD-156L**



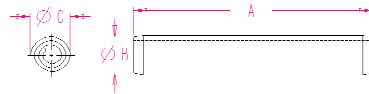
**AD-156T**



**AD-156WT**

**Hensley Style**

Part #	Style	Weight lbs	A	B	C	D	E	Pin
AD-156	AD-156	1.50	1.58	2.13	4.50	1.79	N/A	156 Series Pin
AD-156L	AD-156L	1.70	1.58	2.13	5.29	1.87	N/A	156 Series Pin
AD-156T	AD-156T	1.90	1.58	2.13	5.91	N/A	N/A	156 Series Pin
AD-156WT	AD-156WT	3.50	1.58	2.24	6.06	3.30	N/A	156 Series Pin



**Style B**

**Hensley Style**

Part #	Style	Weight lbs	A	B	C	D	E	Pin
P-100F	Style B		2.25	0.37	0.40			
P-156F	Style B		2.00	0.37	0.40			



P.O. Box 673  
Findlay, Ohio 45839  
800 628 2715  
Fax 419 427 0874