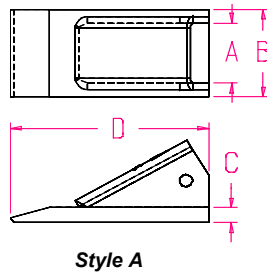


Scarfier Series and Ripper Shanks

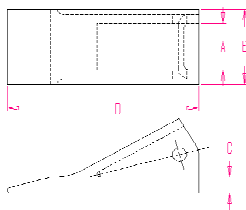
Part #	Style	Weight lbs	A	B	C	D	E	Pin
SCF8075-10C	Scarfier Ripper	9.21	1.53	3.03	4.53	0.84	0.75	N/A
SCF8075-20C	Scarfier Ripper	8.91	3.50	5.50	7.50	0.63	0.75	N/A
SCF8075-30C	Scarfier Ripper	9.06	1.50	3.50	5.50	7.50	0.75	N/A
F-560-24	Ripper	36.95	1.97	N/A	N/A	1.059	1.5	24 Series Pin
F-506-24	Ripper	44.8	5.31	2.36	2.36	1.75	1.5	24 Series Pin
F-507-C-25	Ripper	93.1	5.00	3.50	3.50	2.25	2.00	25 Series Pin



Style A

Scarfier Series Fabricated Teeth

Part #	Style	Weight lbs	A	B	C	D	E	Pin	
8001L	Style A	1.81	1.00	1.56	0.56	6.00	N/A	Crimp-on	
OSP	Style A		0.75	1.12	0.31	2.56	N/A	Crimp-on	
8075	Style A	1.14	0.80	1.38	0.44	5.00	N/A	Crimp-on	
8075-1	Style A	1.14	0.80	1.38	0.44	5.00	N/A	Crimp-on	
FAB-2D-5572		2.65	Please contact for information						



Style A

Scarfier Series Cast Teeth

See previous page for print specs

Part #	Style	Weight lbs	A	B	C	D	E	Pin	
8075	Style A	1.14	0.80	1.38	0.44	5.00	N/A	Crimp-on	
FAB-2D-5572		2.65	Please contact for information						



P.O. Box 673
Findlay, Ohio 45839
800 628 2715
Fax 419 427 0874